

# ***Sukkot Self-Help Ministries***

**March 4, 2021**

***Presents***

# **Soul Ties**

**Part 4**

Copyright © 2021

All rights reserved. No part of this publication may be reproduced, stored in a retrieval system, or transmitted in any form or by any means, electronic, mechanical, photocopying or otherwise, without the prior written consent of the publisher. Short extracts may be used for review purposes, or personal use.

# Recap of Soul Ties

In Soul Ties Part 3,

- ❖ God made three parts of our being, the spirit, the soul, and the body, to function by Him, in order to have fellowship with HIM

In Soul Ties Part 4

- ❖ We'll review how Soul Ties are forever and recurring. We'll identify healthy and unhealthy Soul Ties, and learn why some Soul Ties must be broken

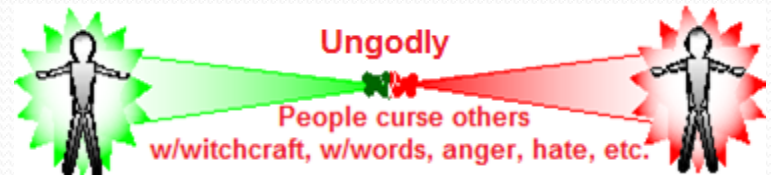
# Soul Ties are Forever & Recurring

Due to God's original design, intent, and desire to communicate and build healthy relationships with His people, Soul Ties were built into our being and will forever be a part of our lives.

Recall that God's intent was to fellowship with Adam in the garden:

- ❖ Gen 3:8 And they heard the voice of the LORD God walking in the garden in the cool of the day
- ❖ Prov 18:24 A man that hath friends must shew himself friendly: and there is a friend that sticketh closer than a brother

Every relationship you have had in your life has a Soul Tie associated with it, and due to the fall of man, it can either be of a Godly nature or an Ungodly nature.



Soul Ties can be recurring (occurring or appearing again), due to negative interactions with a person or party, but they can also re-establish the relationship on positive terms.

# Family, Friends, & Acquaintances

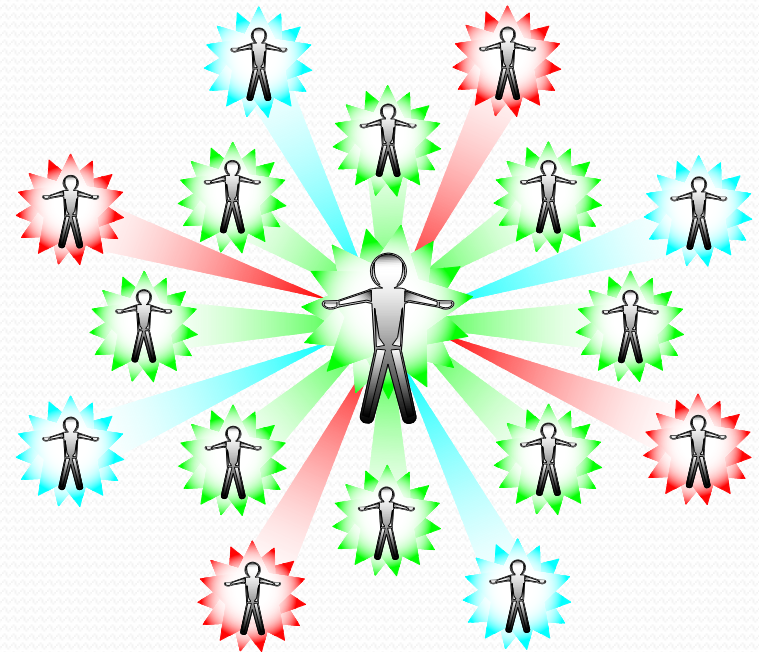
Soul ties are like lines of communication (conduits) from one person to another.

## Godly/Healthy Relationships:

- ✓ Family, siblings and relatives
- ✓ Friends and acquaintances
- ✓ Co-workers, business partners, etc.
- ✓ Life experiences

## Ungodly/Unhealthy Relationships:

- ✓ Verbal, physical, and sexual abuses
  - ✓ Emotional and physiological relationships; Fornication
  - ✓ Traumas, rape, and molestation
  - ✓ Substance abuses
  - ✓ Curses are reintroduced in life
- 
- ❖ Some relationships will start wholesome, then turn bad or hurtful
  - ❖ Some relationships may even be sinful in the beginning
  - ❖ When it's all said and done, we will all have formed many soul ties
  - ❖ And most will need to be severed

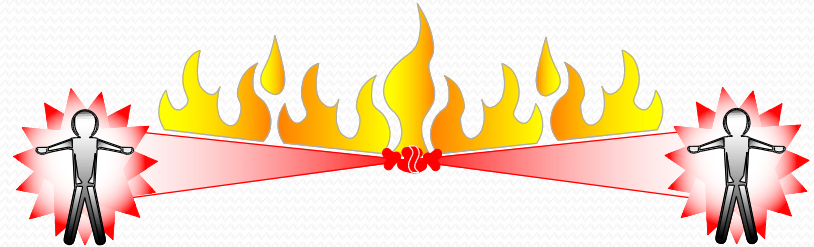


# Unhealthy or Painful Soul Ties

## Unhealthy soul ties

### Friends that we:

- ✓ Are promiscuous with
- ✓ Gossip with
- ✓ Commit illegal actions with, etc.



## Commonly overlooked soul ties

### Lost loved ones:

- ✓ Opens the door to spirits of sorrow, grief, and loneliness
- ✓ Causes abnormal or excessive periods of mourning
- ✓ Frequent dreams of dead loved ones can be a red flag

### Miscarried or aborted children:

- ✓ Guilt, grief, regret, unforgiveness of self and those involved with the decision
- ✓ Unbearable thoughts and tormenting memories
- ✓ Soul ties need to be severed, and the unborn children turned over to God so the mourning process can start and the healing begin

# Negative Effects From Soul Ties

Soul ties are like lines of communication (conduits) from one person to another that can carry protection, love or sin, negative thoughts or intentions. Unless sinful or hurtful soul ties are severed, they will stay intact and cause trouble for years or even a lifetime.

**Negative effects are deposited** from the person (or party) you have verbally or physically interacted with. Here are some examples:

- ❖ You received offenses from people during conversations
- ❖ Words were spoken over you; accusations, anger, blame, cursing you, hatred, jealousy, making fun of you, sly remarks, etc.
- ❖ Drive by curses, gestures, sexual advances, job disputes, etc.

**Symptoms from negative effects** open emotional and physical feelings.

- ❖ Feeling alone, angry, betrayed, confused, depressed, sorrowful, wounded
- ❖ You may have a spirit of heaviness, sleep or slumber, feel a negative cloud over you, or feel sluggish with no motivation to perform tasks, etc.
- ❖ People experience a strange/funky sensation of heat from the front torso to the face. This sensation represents demon spirits connected via Soul Ties
- ❖ Depending on people's aggressiveness or passivity, this sensation will cause anger and hurt or total disregard from the actions of the offensive party



# What's Next?

## Soul Ties Part 5

- ❑ We'll review Soul Ties in scripture with Jacob, David, Jonathan, and Saul

## Closing Statements

Let's review highlights of what we have learned from Soul Ties Part 4.

- ❑ Soul Ties were built into our being and will forever be a part of our lives
- ❑ Soul Ties can be recurring due to negative interactions (verbally or physically) with a person or party, but they can also re-establish the relationship on positive terms
- ❑ Unless sinful or hurtful soul ties are severed, they will stay intact and cause trouble for years or for a lifetime

## **'Soul Ties Part 4'**

# **Thank You**



## **For Your Attendance**